

3 BEDROOMS

The **Wickham**

1,176 SQ. FT.

This split-entry home has it all in an efficient and convenient layout, with an inviting front entry, open living areas, three bedrooms with well-sized closets and a full bathroom with laundry centre. The kitchen features a long raised bartop counter for casual eating; alternate kitchen plan offers an island and a large walk-in pantry with planter shelf. Other options include window, door and roofline treatments.

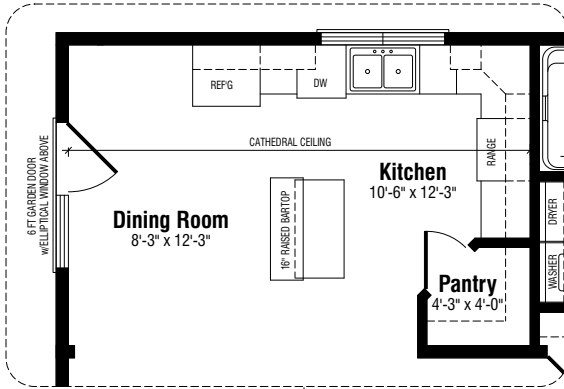
Standard features include:

- Covered front porch with two columns
- Open living room, dining room and kitchen with cathedral ceiling
- 6 ft. patio door in dining room
- Bay window in living room with window seat
- Large single bathroom with laundry centre, accessible from hallway and master bedroom
- Prestige *ComfortPlus* energy efficiency package

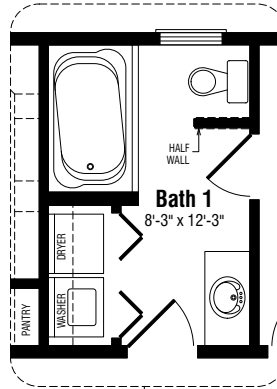
Floor plan options also offer:

- Alternate kitchen layout with walk-in pantry and island with raised bartop
- Alternate bathroom layouts with luxury tub or linen closet

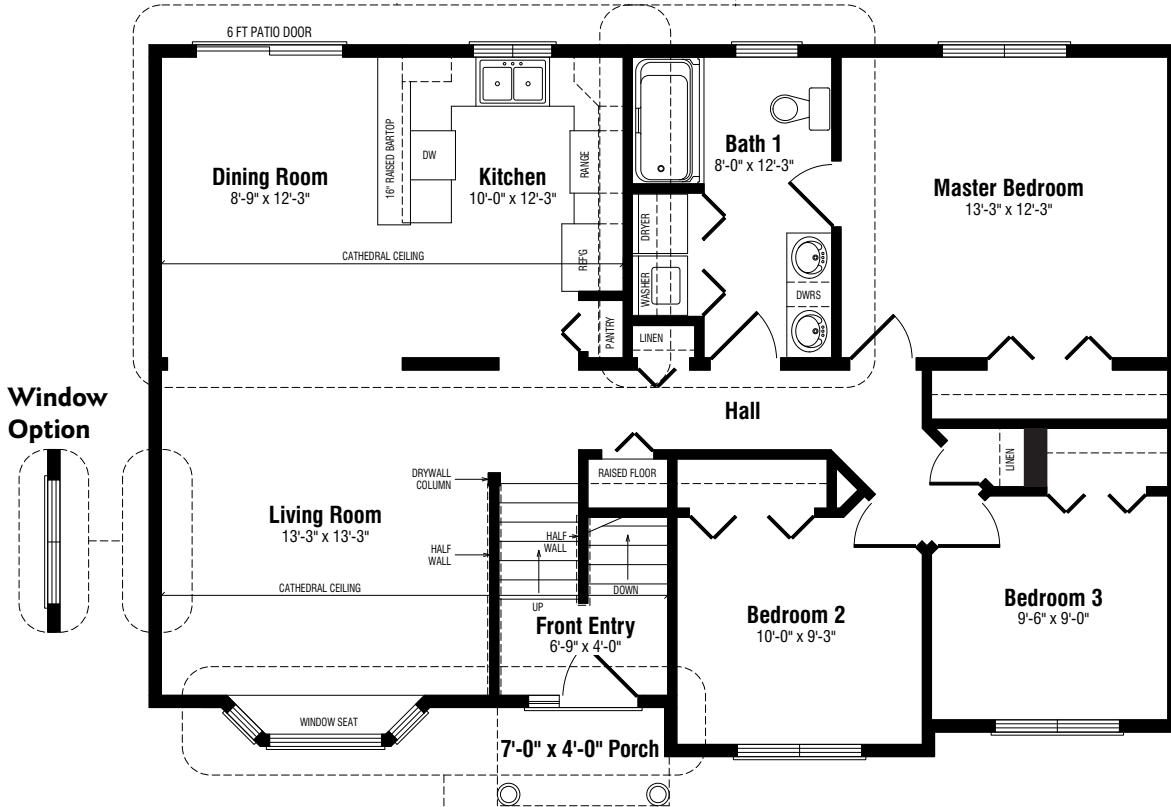
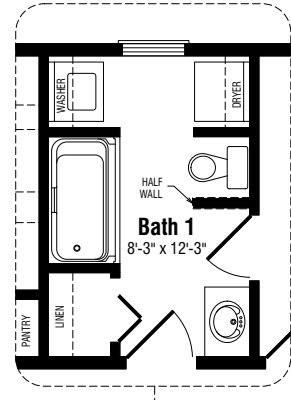
Kitchen Option



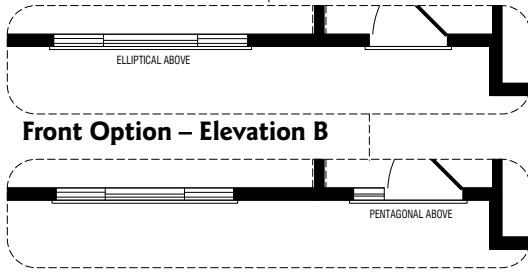
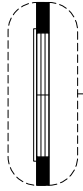
Bathroom I – Option A



Bathroom I – Option B



Window Option

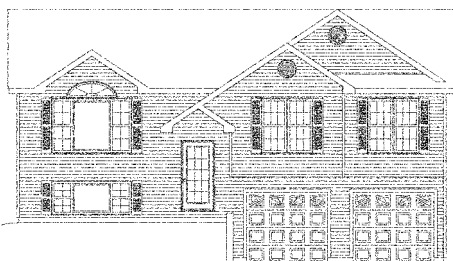


The Wickham

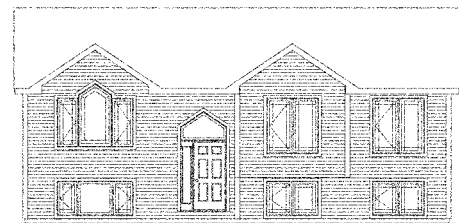
3 BEDROOMS • 1 BATHROOM • 1,176 SQ. FT.

42' x 28'

ELEVATION B



ELEVATION C



Note: Any drawings, concepts or designs created by Prestige Homes are the sole property of Prestige Homes and are subject to copyright protection under the Canadian Intellectual Property Act. Any attempt at utilizing a design, part of a design or concept without express written permission is strictly prohibited. All dimensions are approximate. Sizes and specifications are subject to change without notice.