



ELEVATION A

3 BEDROOMS

*The Lexington*

2,213 SQ. FT.

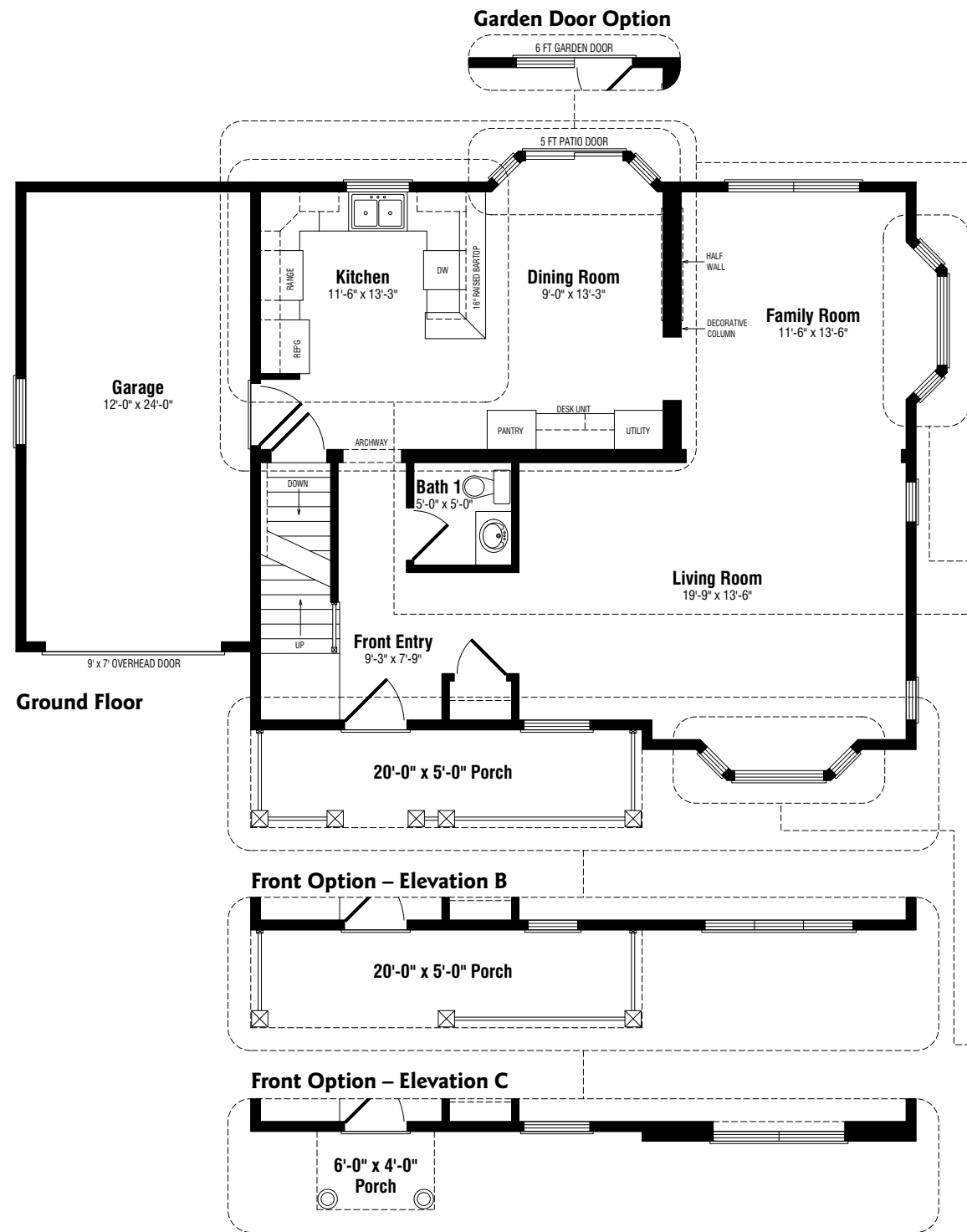
This two-storey home combines old-fashioned country style with contemporary convenience and comfort. The huge L-shaped living area is great for family get-togethers, large or small. Upstairs, bedrooms and bathrooms are all generously sized with ample closet space and a laundry centre off the hall.

**Standard features include:**

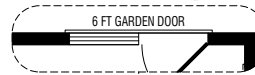
- 20 ft. front porch with railings
- L-shaped living and family room with bay windows and half wall separation from dining room with decorative column
- Open kitchen and dining room with 5 ft. patio door
- Oversized master bedroom with large walk-in closet and luxury ensuite
- Spacious third bedroom above one-car garage
- Washer and dryer on second floor
- Prestige *ComfortPlus* energy efficiency package

**Floor plan options also offer:**

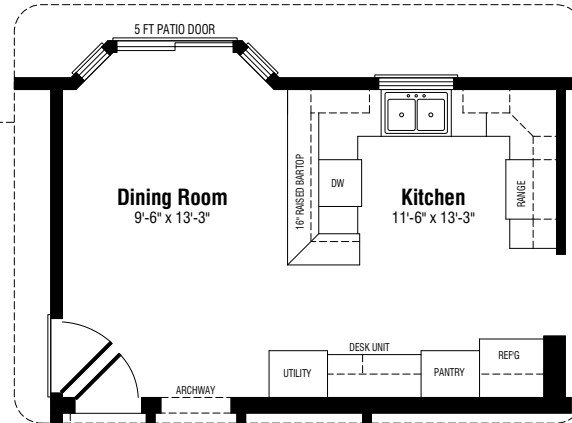
- Alternate third bedroom, bathroom and closet layout
- Alternate kitchen and dining room layout with full-height wall to family room
- Vault ceiling with half-round window in master bedroom
- Desk in second floor hall



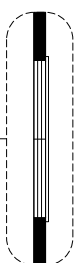
**Garden Door Option**



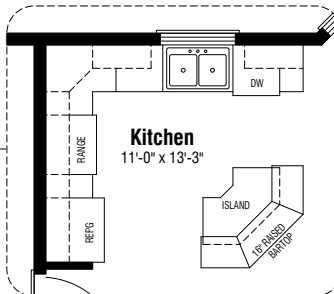
**Kitchen and Dining Room Option**



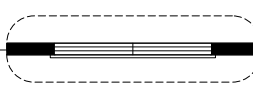
**Family Room Window Option**



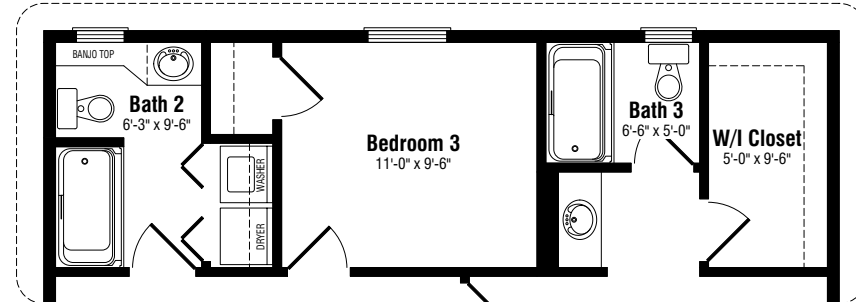
**Kitchen Option**



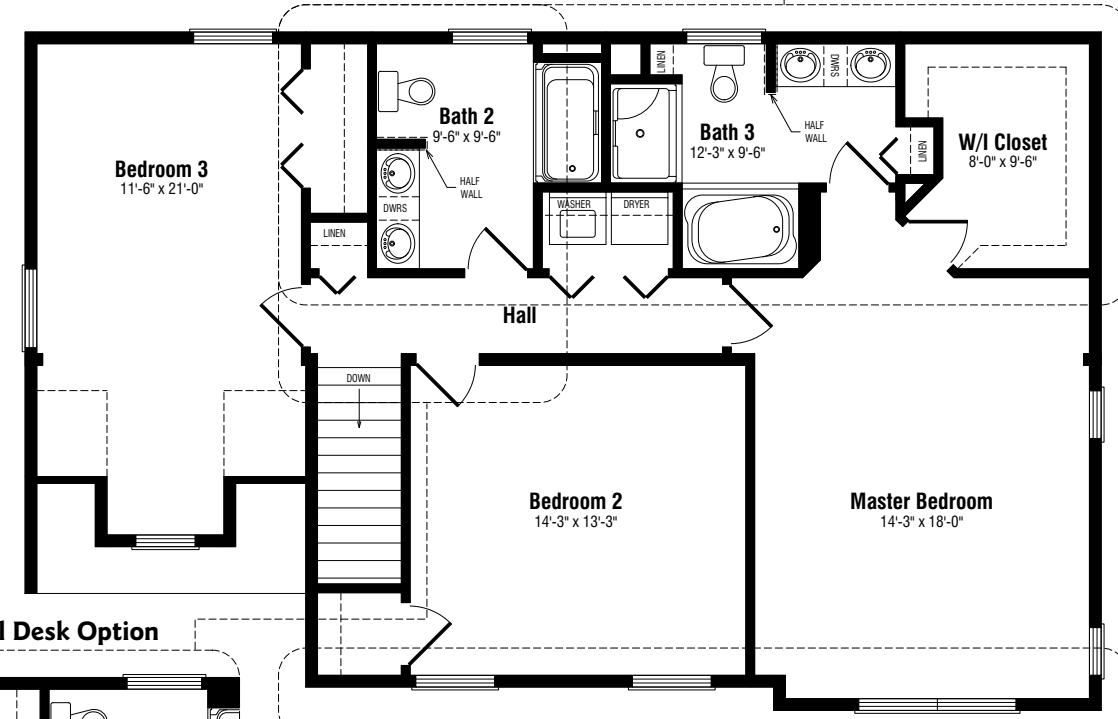
**Living Room Window Option**



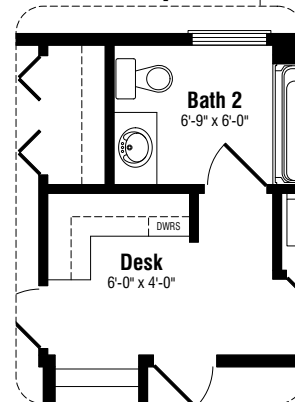
**Bedroom 3 Option – Elevation B**



**Second Floor**



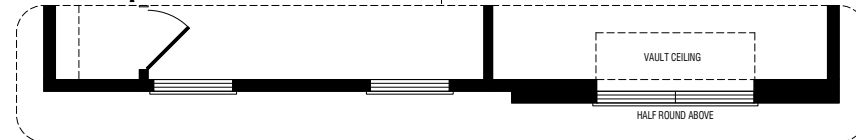
**Hall Desk Option**



**Front Option – Elevation B**



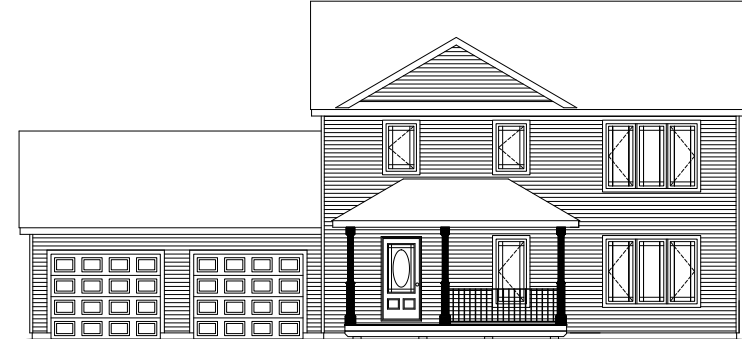
**Front Option – Elevation C**



# The Lexington

3 BEDROOMS • 2 1/2 BATHROOMS • 2,213 SQ. FT. + GARAGE  
46' x 28'

**ELEVATION B**



**ELEVATION C**



Note: Any drawings, concepts or designs created by Prestige Homes are the sole property of Prestige Homes and are subject to copyright protection under the Canadian Intellectual Property Act. Any attempt at utilizing a design, part of a design or concept without express written permission is strictly prohibited. All dimensions are approximate. Sizes and specifications are subject to change without notice.