

3 BEDROOMS

The Harlow

1,456 SQ. FT.

This ranch-style home features three bedrooms and open-concept living areas. The large kitchen includes a dinette area and raised bartop counter. The adjacent family room comes with a fireplace and sliding patio doors. The master bedroom offers both a walk-in closet and luxury ensuite with separate tub and shower. The second bathroom includes a laundry centre. The attached two-car garage offers either front- or side-mounted doors.

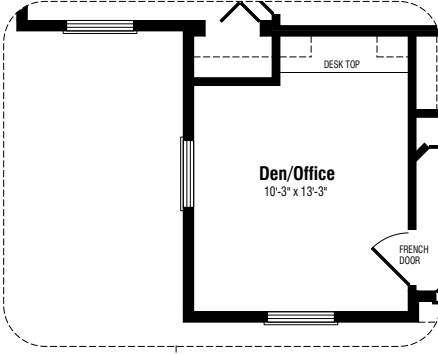
Standard features include:

- Large kitchen with eat-in area
- Family room with fireplace
- 5 ft. patio door off family room
- Large master bedroom with deluxe ensuite and walk-in closet
- Main floor laundry centre
- Prestige *ComfortPlus* energy efficiency package

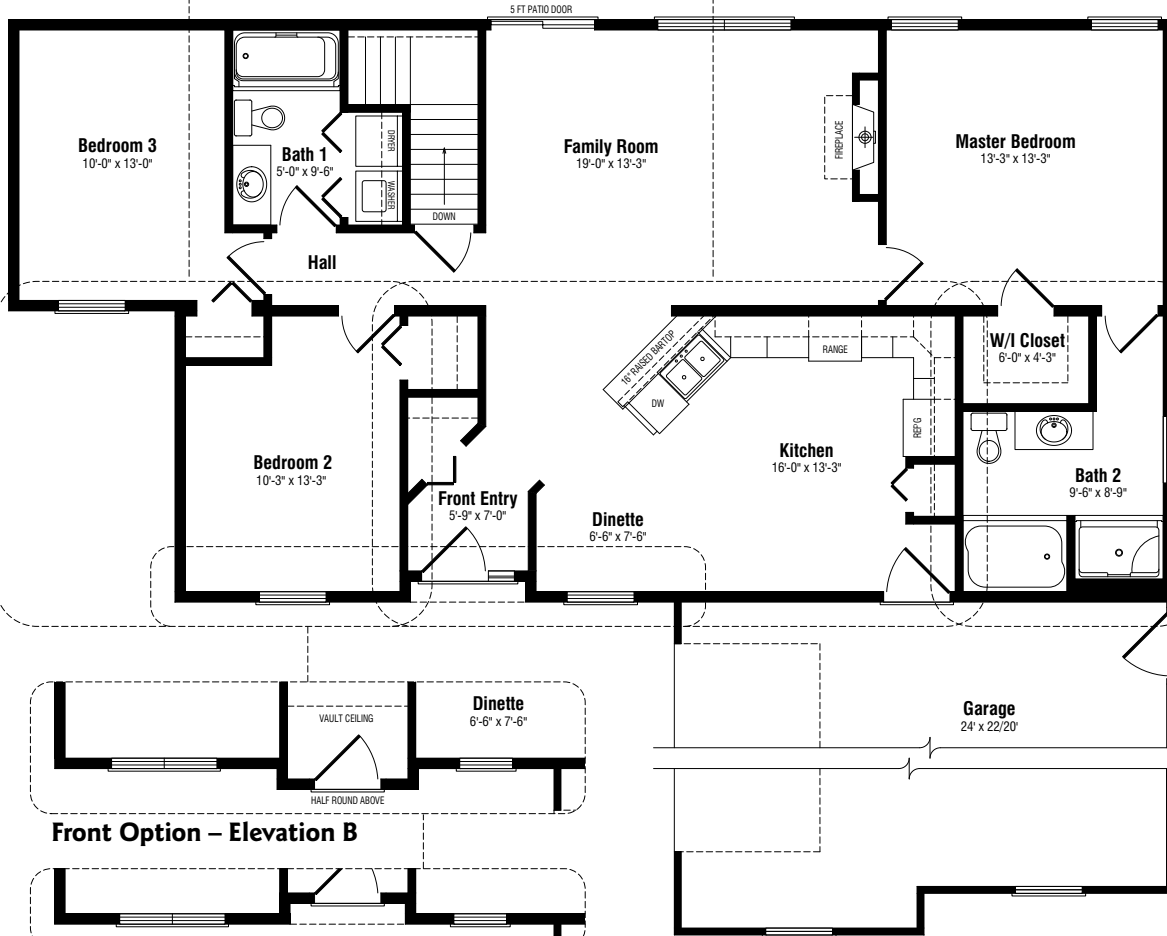
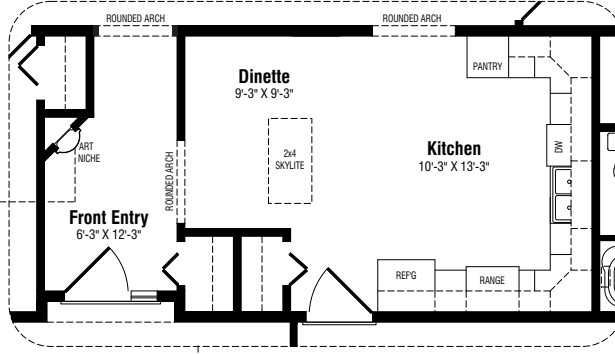
Floor plan options also offer:

- Enclosed kitchen with arched doorway and skylight
- Den/office plan in a two-bedroom configuration
- Alternate master ensuite/walk-in closet plans
- Front- or side-entry into the garage

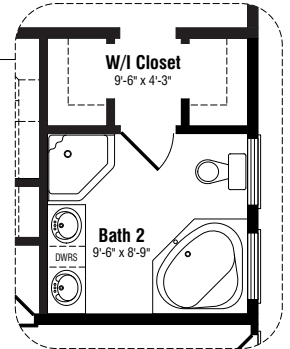
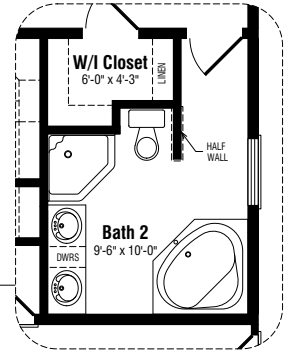
Den/Office Option



Front Entry and Kitchen Option

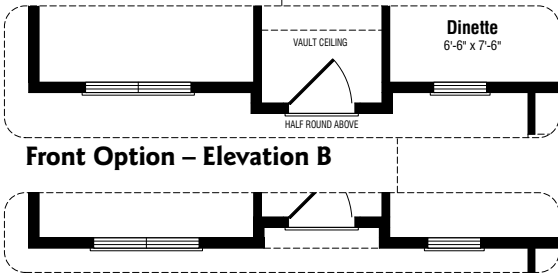


Clot and Bathroom Option 1

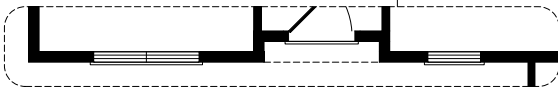


Clot and Bathroom Option 2

Front Option - Elevation B



Front Option - Elevation C

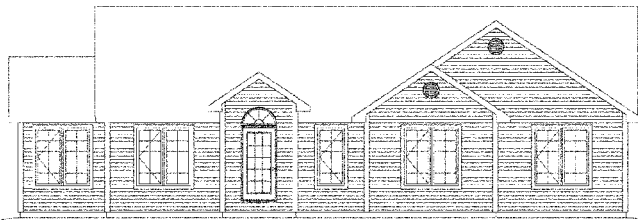


The Harlow

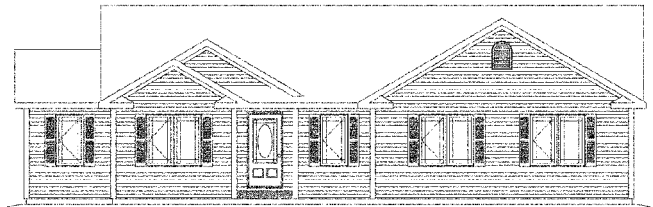
3 BEDROOMS • 2 BATHROOMS • 1,456 SQ. FT. + GARAGE

56' x 28'

ELEVATION B



ELEVATION C



Note: Any drawings, concepts or designs created by Prestige Homes are the sole property of Prestige Homes and are subject to copyright protection under the Canadian Intellectual Property Act. Any attempt at utilizing a design, part of a design or concept without express written permission is strictly prohibited. All dimensions are approximate. Sizes and specifications are subject to change without notice.