

3 BEDROOMS

The *Dover*

1,232 SQ. FT.

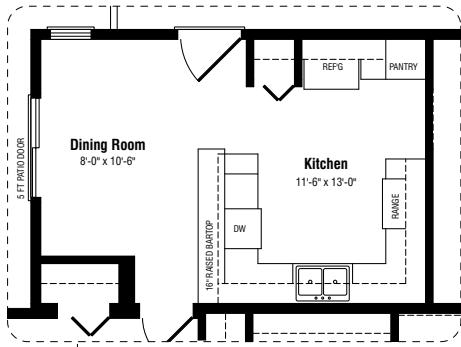
This space-efficient ranch-style home features three bedrooms, a spacious living room, and an open-concept kitchen and dining room. Choose a full ensuite or a two-piece ensuite plus walk-in closet in the master bedroom. The front bedroom can be configured as a den/home office. The covered porch is also available as an enclosed sun porch with French doors.

Standard features include:

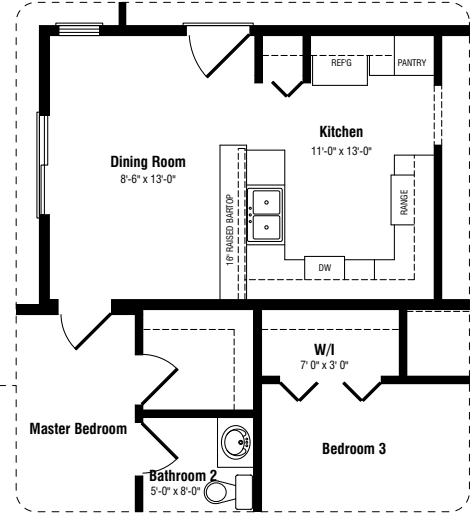
- 15 ft. covered porch
- Single-car garage
- Open-concept kitchen and dining room with 5 ft. patio doors
- Master bedroom with full ensuite
- Prestige *ComfortPlus* energy efficiency package

Floor plan options also offer:

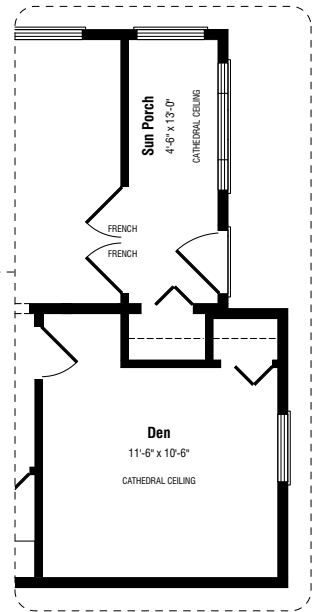
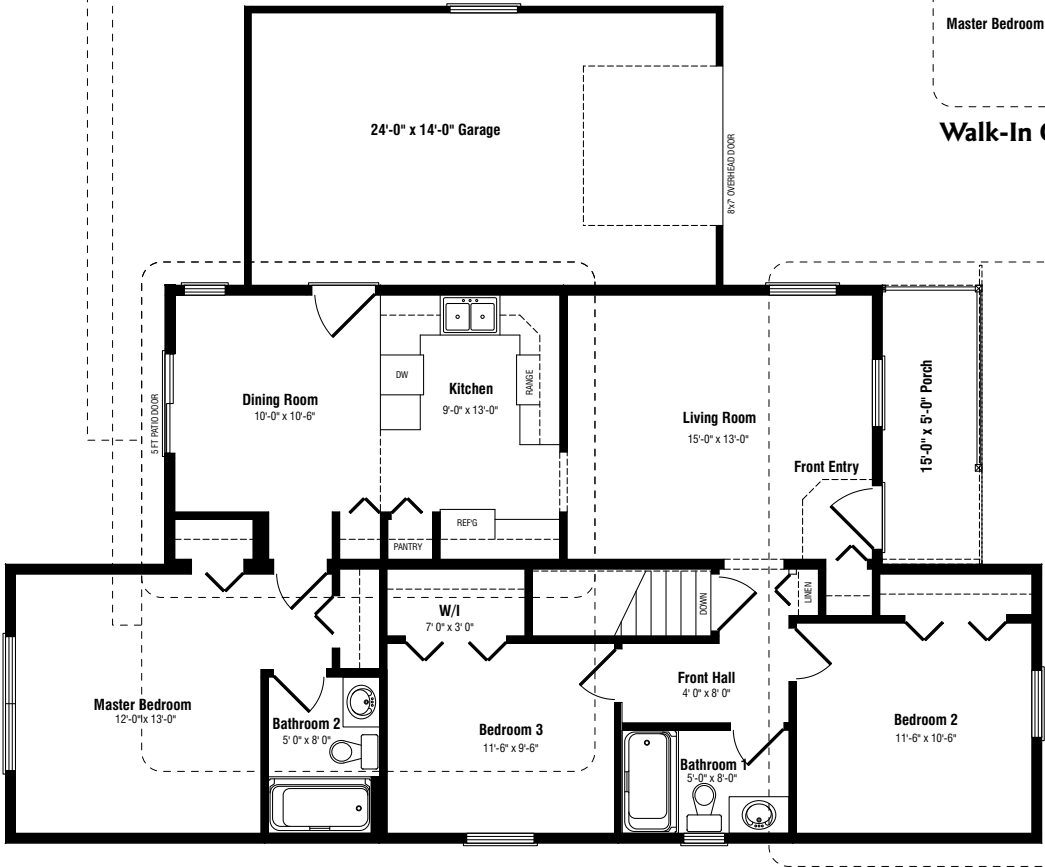
- Reversed kitchen with raised bartop counter
- Den/office in a two-bedroom configuration
- Alternate master ensuite/walk-in closet plans
- Front sun porch with French doors



Kitchen Option



Walk-In Closet Option



Sun Porch Option

The Dover

3 BEDROOMS • 2 BATHROOMS

1,232 SQ. FT. + GARAGE

52'36" x 28'

ELEVATION B



ELEVATION C



Note: Any drawings, concepts or designs created by Prestige Homes are the sole property of Prestige Homes and are subject to copyright protection under the Canadian Intellectual Property Act. Any attempt at utilizing a design, part of a design or concept without express written permission is strictly prohibited. All dimensions are approximate. Sizes and specifications are subject to change without notice.